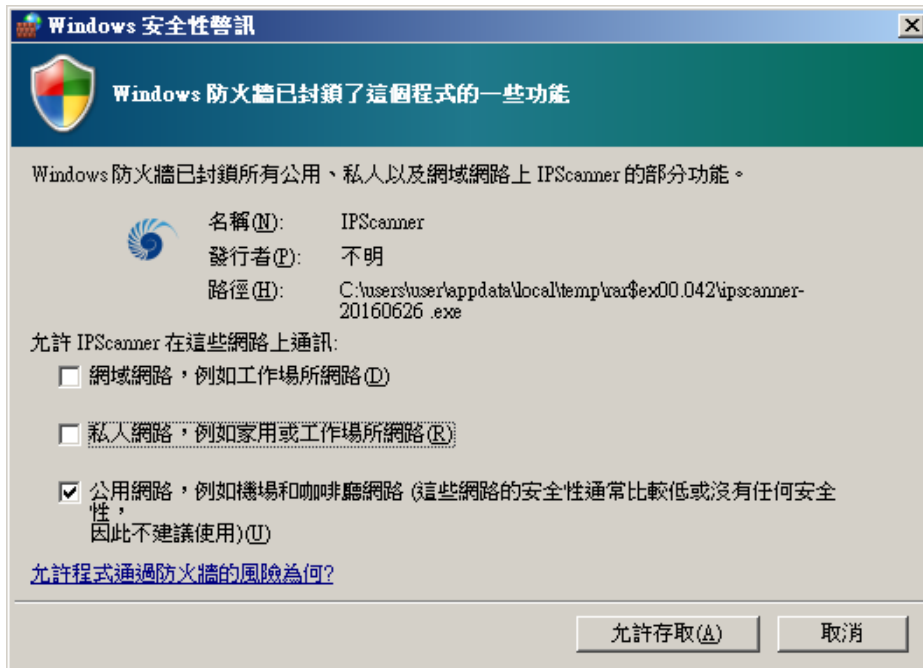
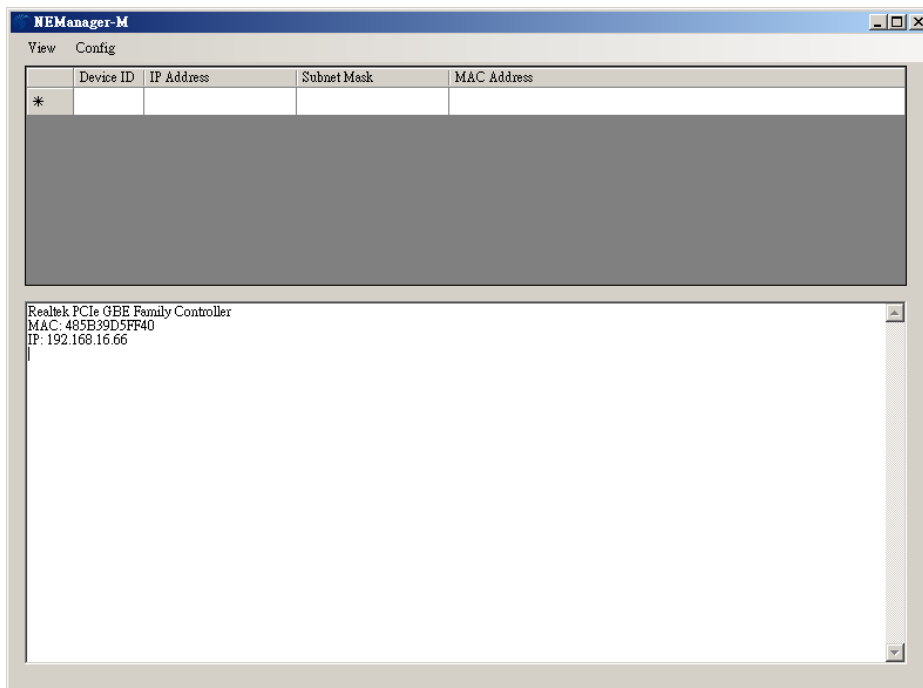


LAN 安裝說明

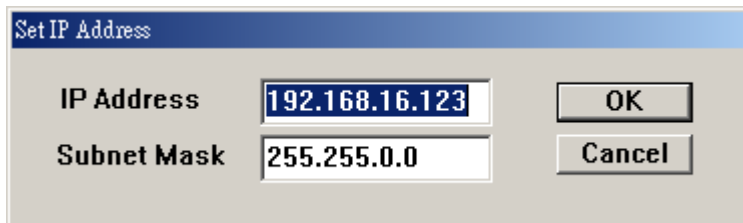
- 一. 將設備接上網路線，網路線另一端請接到 HUB 集線器上。
- 二. 請執行 PScanner.EXE，會先出現 Windows 安全性警訊，請選取公用網路，再按下[允許存取]，



接下來就會出現如下畫面：若沒有出現任何裝置，請按下 F5 進行重新偵測，或檢查第一個步驟是否正常完成。



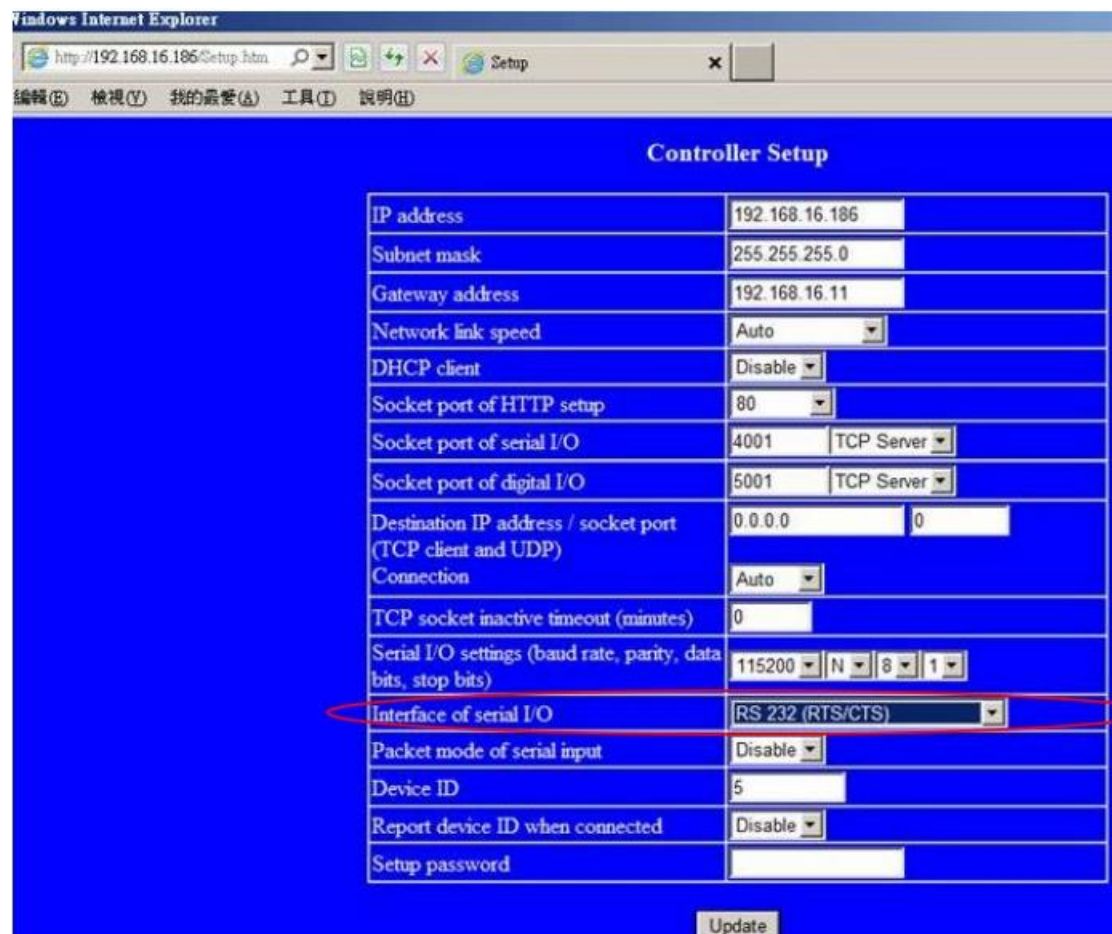
三. 畫面上會顯示出目前所偵測到的裝置，請選按 Config 下的 IP Address，會出現如下畫面：



A dialog box titled "Set IP Address" with a blue header bar. It contains two input fields: "IP Address" with the value "192.168.16.123" and "Subnet Mask" with the value "255.255.0.0". To the right of these fields are two buttons: "OK" and "Cancel".

四. 請設定一可用的網路 IP Address 及 Subnet Mask. (可詢問網管人員取得正確可用之網路設定值)

五. 請選按的 Device Setting，會出現如下畫面.



A screenshot of a web browser window showing the "Controller Setup" page. The browser's address bar shows "http://192.168.16.186/Setup.htm". The page has a blue background and a title bar. Below the title bar is a menu bar with options: 編輯(E), 檢視(V), 我的最愛(A), 工具(T), 說明(H). The main content area is titled "Controller Setup" and contains a table of configuration settings. The "Interface of serial I/O" row is highlighted with a red oval. At the bottom right of the page is an "Update" button.

Controller Setup	
IP address	192.168.16.186
Subnet mask	255.255.255.0
Gateway address	192.168.16.11
Network link speed	Auto
DHCP client	Disable
Socket port of HTTP setup	80
Socket port of serial I/O	4001 TCP Server
Socket port of digital I/O	5001 TCP Server
Destination IP address / socket port (TCP client and UDP)	0.0.0.0 0
Connection	Auto
TCP socket inactive timeout (minutes)	0
Serial I/O settings (baud rate, parity, data bits, stop bits)	115200 N 8 1
Interface of serial I/O	RS 232 (RTS/CTS)
Packet mode of serial input	Disable
Device ID	5
Report device ID when connected	Disable
Setup password	

Update

六. 請輸入相關之設定值：

- i. IP Address：網路 IP 位址
- ii. Subnet Mask：子網路掩罩
- iii. Gateway Address：閘道位址
- iv. Network link speed：網路連線速率，預設為 AUTO
- v. DHCP client：動態 IP 設定，預設值為 Disable，除非有 DHCP Server 才可將設定值改為 Enable
- vi. Socket port of HTTP setup：預設為 80，無需設定
- vii. Socket port of serial I/O：請設定為 4001
- viii. Socket port of digital I/O：請設定為 5001
- ix. Destination IP address / socket port (TCP client and UDP) Connection：無需設定
- x. Serial I/O settings (baud rate, parity, data, bits, stop bits)：請輸入 115200, N, 8, 1
- xi. Interface of serial I/O：請設定為 RS-232(RTS/CTS)
- xii. Packet mode of serial input：預設值 Disable, 無需設定
- xiii. Device ID：預設值 5，無需設定
- xiv. Setup password：可設定安裝密碼，建議無需設定
- xv. Access password：可設定動作密碼，建議無需設定